

ARIZONA NATIONAL *Livestock Show*



Swine Breed CHARACTERISTICS



ARIZONA NATIONAL *Livestock Show*

Why do we classify?



The understood purpose of a livestock show is to compare animals to determine the “best” or Grand Champion of the show. That said, within the realm of registered (or “papered”) shows, we also want to measure each animal on how well they conform to a breed standard.

Maintaining genetic diversity of all purebreds is crucial to meeting the ever changing market needs and economic value of the pork industry. With this in mind, the Arizona National, in an effort to maintain breed integrity, will institute a classifying system for all registered barrows and gilts at the 2022 show.

All breed associations represented have been contacted for their input on breed standards and invited to participate in the classifying system.

A committee of three swine producers will evaluate each registered animal as they enter the holding area. Each member of the committee will have a ‘yes’ and a ‘no’ coin and will independently place their coin in a bucket indicating whether the pig presented meets the breed standards posted in the Arizona National Swine Breed Characteristics document and the current Arizona National Premium Book. If the majority of the coins are ‘yes’ the pig will proceed to the holding pens. If two or more of the coins are ‘no’, the pig will be reclassified to the Crossbred division. The decision of the classifying committee is final.



ARIZONA NATIONAL Livestock Show

Berkshire Breed

CHARACTERISTICS



EXAMPLES OF IDEAL, ACCEPTABLE, DISCRIMINATORY AND DISQUALIFIABLE CHARACTERISTICS

Berkshire Barrow Standards:

Ideal Ear Presentation:

- Ears must be erect.



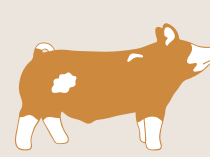
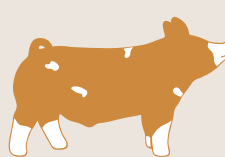
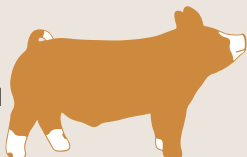
Ideal Coloring:

- Should have six white points: nose, each leg/foot and at the end of tail (unless tail is docked).



Acceptable Coloring:

- Must have white on at least three of four legs and the tail (unless tail is docked).



- An occasional splash of white skin/hair may appear on head and body.

Discriminatory Coloring:

- An occasional splash of white may appear on the body.



Disqualifiable Coloring:

- Must not have a solid white ear.

- Must not have a solid black nose (rim of nose).



- Solid white or a solid black head from the ears forward.



- Must not have full or 3/4 belting pattern that fully encircles or nearly encircles the body.

Berkshire Gilts must meet the above standards along with the following:

Disqualifiable Body Attributes:

- Must not have a hair swirl on the upper half of the body.

ARIZONA NATIONAL *Livestock Show*

Chester White Breed

CHARACTERISTICS



EXAMPLES OF IDEAL, ACCEPTABLE, DISCRIMINATORY AND DISQUALIFIABLE CHARACTERISTICS

Chester White Barrow and Gilt Standards:

Ideal Ear Presentation:

- Ears must be down and medium sized.



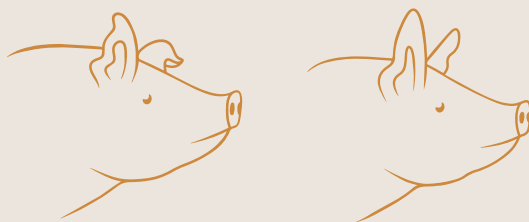
Discriminatory Ear Presentation:

- Partially erect/level ear.



Disqualifiable Ear Presentation:

- Erect ears (one or both).



Ideal Coloring:

- Must be solid white in color; with no colored hair.

Discriminatory Coloring:

- The pig cannot have more than five pigmentation spots on its body, and none of these areas can be larger than a silver dollar.

Disqualifiable Coloring:

- Colored hair.
- Color on skin, cumulatively larger than a US minted silver dollar.

ARIZONA NATIONAL Livestock Show

Duroc Breed

CHARACTERISTICS



EXAMPLES OF IDEAL, ACCEPTABLE, DISCRIMINATORY AND DISQUALIFIABLE CHARACTERISTICS

Duroc Barrow and Gilt Standards:

Ideal Ear Presentation:

- Ears must be down and medium sized.

* Picture depicts ear set only, not representative of color



Discriminatory Ear Presentation:

- Partially erect/level ear.

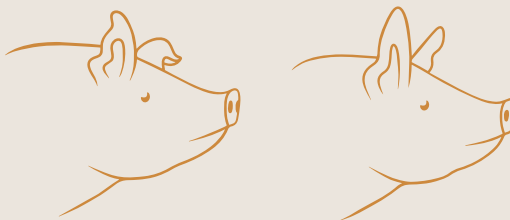
* Picture depicts ear set only, not representative of color



Disqualifiable Ear Presentation:

- Erect ears (one or both).

* Picture depicts ear set only, not representative of color



Ideal Coloring:

- Must be red in color and possess Duroc breed character

Discriminatory Coloring:

- Must not have more than three black spots on the skin, and none of these spots can be larger than two inches in diameter.

Disqualifiable Coloring:

- Must not have any black hair located on the animal.
- Must not have any shading or indication of a belt.

Disqualifiable Body Attributes:

- Must not show evidence of an extra dew claw.

ARIZONA NATIONAL *Livestock Show*

Hampshire Breed

CHARACTERISTICS

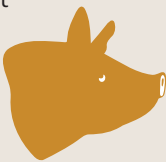


EXAMPLES OF IDEAL, ACCEPTABLE, DISCRIMINATORY AND DISQUALIFIABLE CHARACTERISTICS

Hampshire Barrow and Gilt Standards:

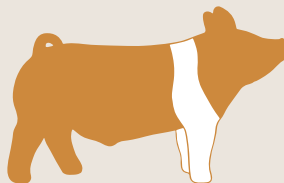
Ideal Ear Presentation:

- Ears must be erect and not rounded.



Ideal Coloring:

- Must be black in color with a white belt starting on a front leg and possess Hampshire breed character. One white front hoof constitutes the start of a belt.



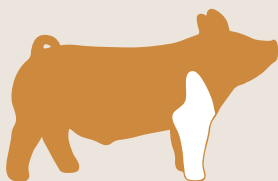
Disqualifiable Coloring:

- Must not have any white hair or indications of streaking on the forehead.
- Must not have any red hair.

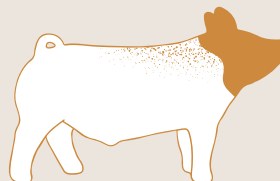


Acceptable Coloring:

- The belt may partially or totally encircle the body.



- A barrow is eligible if the head is black and the body is white, with evidence of freckling down the top.



Disqualifiable Body Attributes:

- Must not show evidence of an extra dew claw.

Hampshire gilts must meet the above ear and body attributes requirements along with the following color markings:

Ideal Coloring:

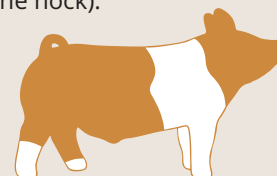
- Must be black in color with a white belt starting on a front leg and possess Hampshire breed character. One white front hoof constitutes the start of a belt.

Acceptable Coloring:

- A gilt can have white on her nose as long as the white does not break the rim of the nose. When her mouth is closed, the white under the chin must not exceed what a U.S. minted quarter will cover.



- White is allowed on the rear legs as long as it does not extend above the tuber calis bone (knob of the hock).



ARIZONA NATIONAL *Livestock Show*

Hereford Breed

CHARACTERISTICS



EXAMPLES OF IDEAL, ACCEPTABLE, DISCRIMINATORY AND DISQUALIFIABLE CHARACTERISTICS

Hereford Barrow and Gilt Standards:

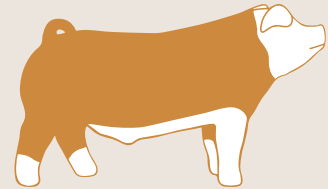
Ideal Ear Presentation:

- Ears are down.



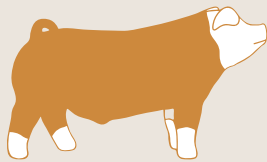
Acceptable Coloring:

- Underline of animal can be red or white.



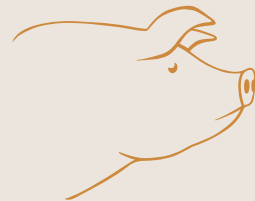
Ideal Coloring:

- Body must be red (light or dark); however, deep red is preferred with a white head, white ears and four white legs.



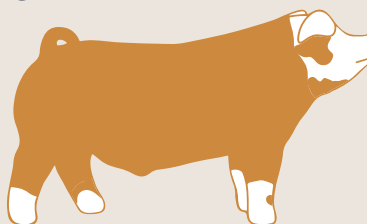
Discriminatory Ear Presentation:

- Ears must be at least breaking forward.



Discriminatory Coloring:

- Can have some red on the head and one ear and/or red on the legs.



ARIZONA NATIONAL *Livestock Show*

Landrace Breed

CHARACTERISTICS



EXAMPLES OF IDEAL, ACCEPTABLE, DISCRIMINATORY AND DISQUALIFIABLE CHARACTERISTICS

Landrace Barrow and Gilt Standards:

Ideal Ear Presentation:

- Ears must be large, slant forward and drop down.



Ideal Coloring:

- Must be white in color and possess Landrace breed character.

Discriminatory Coloring:

- Must not allow more than three spots of skin pigmentation.
- Must not allow any spot of skin pigmentation larger than one U.S. minted quarter.

Disqualifiable Coloring:

- Must not allow any color hair other than white.

Disqualifiable Body Attributes:

- Must not show evidence of an extra dew claw.

ARIZONA NATIONAL *Livestock Show*

Poland China Breed

CHARACTERISTICS



EXAMPLES OF IDEAL, ACCEPTABLE, DISCRIMINATORY AND DISQUALIFIABLE CHARACTERISTICS

Poland China Barrow and Gilt Standards:

Ideal Ear Presentation:

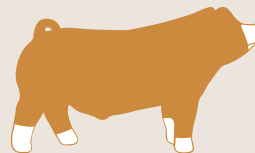
- Must have down ears.

* Picture depicts ear set only, not representative of color



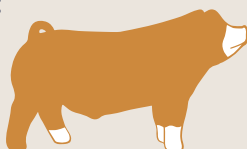
Ideal Coloring:

- Must be black with six white points (face, feet and tail (unless tail is docked)) and possess Poland China Breed character.



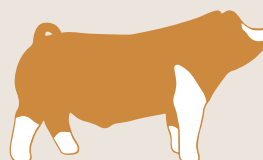
Acceptable Coloring:

- A hog may not possess more than one black leg.



Disqualifiable Coloring:

- Must not have evidence of belt formation.
- Cannot have any red or sandy hair and/or pigment



ARIZONA NATIONAL *Livestock Show*

Spotted Breed

CHARACTERISTICS



EXAMPLES OF IDEAL, ACCEPTABLE, DISCRIMINATORY AND DISQUALIFIABLE CHARACTERISTICS

Spotted Barrow and Gilt Standards:

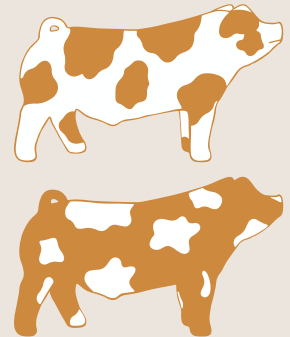
Ideal Ear Presentation:

- Ears must not be erect.



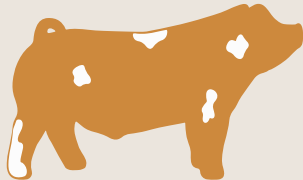
Ideal Coloring:

- Must be black and white in color and possess Spotted breed character.

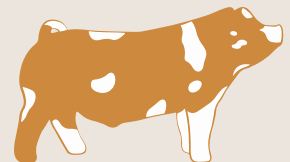


Disqualifiable Coloring:

- Must not be solid black from ears forward.



- Any red tinted or sandy brown spots are ineligible.
- No distinct white belt pattern (hair or skin) encircling and extending down and onto each shoulder.



ARIZONA NATIONAL *Livestock Show*

Tamworth Breed

CHARACTERISTICS



EXAMPLES OF IDEAL, ACCEPTABLE, DISCRIMINATORY AND DISQUALIFIABLE CHARACTERISTICS

Tamworth Barrow and Gilt Standards:

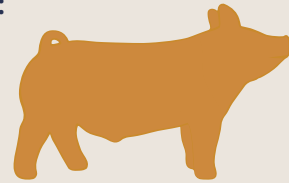
Ideal Ear Presentation:

- Ears must be erect.



Ideal Coloring:

- Golden red to dark red in color.

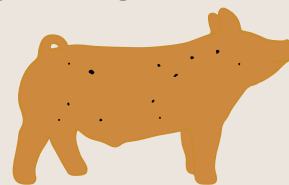


Ideal Body Attributes:

- Must be long headed and long bodied.

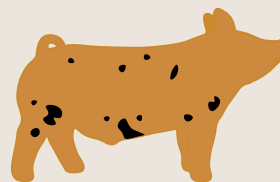
Discriminatory Coloring:

- No more than 5% black spots.



Disqualifiable Coloring:

- No white hair or white spots.
- More than 5% black spot



ARIZONA NATIONAL *Livestock Show*

Yorkshire Breed

CHARACTERISTICS



EXAMPLES OF IDEAL, ACCEPTABLE, DISCRIMINATORY AND DISQUALIFIABLE CHARACTERISTICS

Yorkshire Barrow and Gilt Standards:

Ideal Ear Presentation:

- Ears must be erect.



Ideal Coloring:

- Must be white in color and possess Yorkshire breed character.

Discriminatory Coloring:

- Must not have more than two pigmentation spots larger than a U.S. minted dime or one pigmentation spot larger than a U.S. minted quarter. These spots combined must not exceed a U.S. minted silver dollar.

Disqualifiable Coloring:

- Must not have any color hair except for white.

Disqualifiable Body Attributes:

- Evidence of an extra dew claw.